

Series HSC

316 Stainless Steel Centrifugal Pump

Flows to 140 GPM
Pressure to 146 Ft. TDH



Model
HSC-1 1/2MV

Features:

- Chemical Resistant
- Simplicity of Design
- High Operational Efficiency
- Easy Maintenance
- Double Seal with Water Flush
- Multi-Stage

Recommended Applications:

- Transferring
- Filtering
- Recirculation
- Solvents
- Acid and Alkalies

Penguin series HSC are corrosive-resistant all-purpose 316L stainless steel pumps ideal for many O.E.M. and chemical processing applications, including most acids and alkalies as well as solvents to 250°F. The high efficiency of this pump produces up to 90 feet of head. The HSC series pump is widely used for transfer of non-flammable, non-abrasive fluids which are compatible with pump component materials including cleaners, caustic materials, salt solutions, chlorinated solvents, photographic chemicals and de-ionized water. WET ENDS ARE AVAILABLE SEPARATELY FOR PLACEMENT ON CUSTOMERS' OWN MOTORS.

Seals

Penguin series HSC pumps are supplied with an EPR/ mechanical seal. Optional seals include viton/carbon/ceramic and viton/silicon carbide/silicon carbide. A double mechanical seal available in the same materials with water flush can also be supplied.

Motors

The pump is directly coupled to a 3450 RPM, ball bearing motor. All motors are totally enclosed fan cooled. Single phase motors are wired 115V and supplied with a cord and plug. Three phase motors are shipped unwired.

Elastomers

Ethylene propylene (EPR) is the standard elastomer for O-rings and seal components. Viton is available as an option.

Pedestal Mount

Pedestal mounting rather than close coupling is available. The pedestal bearing bracket, pump head, and motor are mounted on a common polypropylene base.

Multi-Stage

For high pressures to 110TDH, a multi-stage pump is available.

Series HSC

316 Stainless Steel Centrifugal Pump

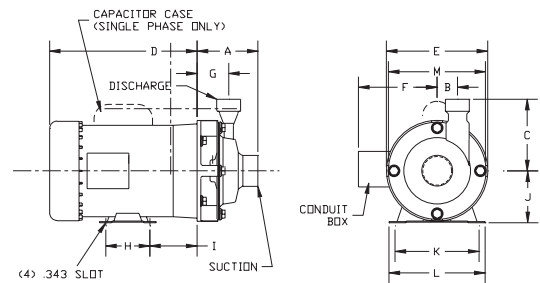
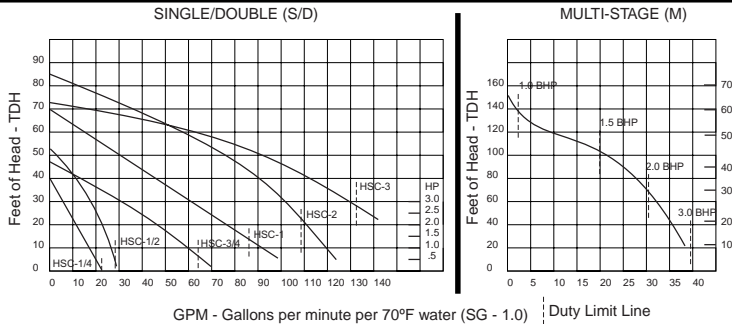
Specifications

Pump					Motor					Dimensions				
Model	Max Flow (gpm)	Max Head (ft)	Suction	Discharge	HP	RPM	Volts	Hertz	Phase	Amps	Ht	Wth	Lth	Wt
HSC-1/4 S,D	23	40	3/4 FPT	1/2 FPT	1/3	3450	115/230	60	1	6.4/3.2	8	6	14	34
HSC-1/2 S,D	29	52			1/2		7.8/3.9	35						
HSC-3/4 S,D	64	46	1 1/2 FPT	1 FPT	3/4		208-230/460	50/60	3	1.9-1.8/1.9	33			
							115/230	60	1	9.8/4.9	39			
							208-230/460	3	2.7-2.6/1.3	41				
							115/230	1	11/5.5	46				
HSC-1 S,D	87	70	1 1/2	1 1/2	1		208-230/460	3	3.4-3.2/1.6	41				
HSC-1 1/2 M	20	146					3/4 FPT	1/2 FPT	1 1/2	115/230	50/60	1	17.8-8.9	55
										115/230	1	4.8-4.6/2.3	48	
HSC-2 S,D	110	75	1 1/2 FPT	1 FPT	2		208-230/460	3	3	5.8-5.4/2.7	55			
HSC-2 M	32	146	3/4 FPT	1/2 FPT	2	8.2-7.8/3.9				60				
HSC-3 S,D	132	85	2 FPT	1 1/2 FPT	3									
HSC-3 M	40	146	3/4 FPT	1/2 FPT	3									

Dimensions

Model	A			B		C		D	E	F	G			H	I	J	K	L	M
	Single	Double	Multi	Single/Double	Multi	Single/Double	Multi				Single	Double	Multi						
HSC-1/4	4.37	5.58	-	2.0	-	4	-	9.31	5.68	4.5	2.12	3.33	-	3	2.56	3.5	4.87	6.5	6.87
HSC-1/2								10.31											
HSC-3/4	4	5.31	-	1.62	-	5	-	11.25	6.62	5.25	-	-	-	3	2.56	3.5	4.87	6.5	6.87
HSC-1								12.12											
HSC-1 1/2	-	-	6.06	-	-	-	-	12.12	6.62	5.25	-	-	-	3	2.56	3.5	4.87	6.5	6.87
HSC-2	4	5.31	6.06	1.62	2.06	5	4	12.12											
HSC-3	3.75	5.06	6.06	1.5	2.06	5	4	12.12											

Performance Charts



Nomenclature

HSC	1/2	D	E	P
Horizontal Stainless Steel Centrifugal Pump	Horsepower	Seal	Seal Material	Pedestal
	1/4 = 1/3	S=single seal	E=ethylene propylene	blank=close coupled
	1/2 = 1/2	D=double seal	carbon/ceramic	P=pedestal mounted
	3/4 = 3/4	M=single seal/	V=viton/carbon/	
	1 = 1	multi-stage	ceramic	
	2 = 2		VSC=viton silicon carbide/	
	3 = 3		silicon carbide	

A Division of Penguin Pumps Inc.
7932 Ajay Drive, Sun Valley, CA 91352 • 818/504-2391 • 818/768-7590 FAX

